



NESTiG




# How to Install Your Floating Shelves



[nestig.com](http://nestig.com)



Nestig, Inc.  
[hello@nestig.com](mailto:hello@nestig.com)  
PO Box 1106, New York, NY 10023

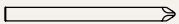


## How-To

1. Position the included paper templates at the desired heights on your wall, ensuring that they are level.
2. Drill corresponding holes in the wall where indicated.
3. Insert an anchor into each hole in the wall, using a hammer for a better fit.
4. Align the holes in each shelf with the holes in the wall.
5. Attach each shelf to the wall using the screws and a Phillips head screwdriver.
6. Repeat steps 1-5 to install the second shelf.

## Product Parts

**Not included:** Phillips screwdriver, hammer, and drill



Phillips head screwdriver

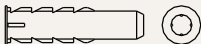
**A**



x04

Screw 6mm

**B**



x04

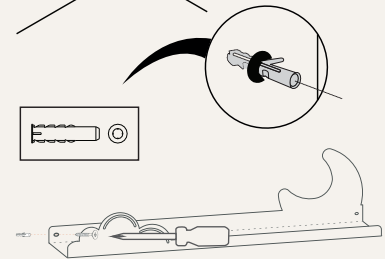
Anchor 6mm

## Installation

### STEP 1 OF 2



Position the included paper template on the wall at the desired height and drill corresponding holes where indicated.



### STEP 2 OF 2



Position the included paper template on the wall at the desired height and drill corresponding holes where indicated.

